



# VERSA<sup>™</sup>

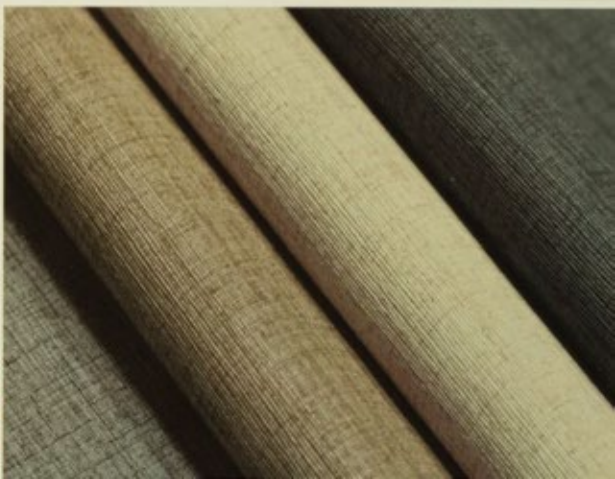
DESIGNED SURFACES

Since 1950

## VERSA I

Type I

**Fabric Backed Vinyl Wallcovering**





# FIJI



## Specifications

- Width – 52/54 in (132/137 cm)
- Backing – Osnaburg
- Installation – Reverse Hang / Radom Match
- Weight – 15 OZ/LY (340 gr/m<sup>2</sup>)
- Packing: 30 LY(37.4 m<sup>2</sup>) / Roll

## Environmental Attributes

- Low VOC meets CA01350
- Meets LEED criteria for EQc2
- Meets NSF/ANSI 342 certification; check with distributor for actual level
- Meets GB18585-2001

## Fire Resistance Attributes

- USA ASTM E84 Class A
- China GB8624 Class B1
- European EN13501 Class B1
- British BS 476 Part 6 & Part 7 Class 0



燃烧性能等级标识







**V15-101**



**V15-102**



**V15-103**



**V15-104**



**V15-105**



**V15-106**



# Bristol



## Specifications

- Width – 52/54 in (132/137 cm)
- Backing – Osnaburg
- Installation – Reverse Hang / Radom Match
- Weight – 15 OZ/LY (340 gr/m<sup>2</sup>)
- Packing: 30 LY(37.4 m<sup>2</sup>) / Roll

## Environmental Attributes

- Low VOC meets CA01350
- Meets LEED criteria for EQc2
- Meets NSF/ANSI 342 certification; check with distributor for actual level
- Meets GB18585-2001

## Fire Resistance Attributes

- USA ASTM E84 Class A
- China GB8624 Class B1
- European EN13501 Class B1
- British BS 476 Part 6 & Part 7 Class 0







**V15-107**



**V15-108**



**V15-109**



**V15-110**



**V15-111**



# Brio



## Specifications

- Width – 52/54 in (132/137 cm)
- Backing – Osnaburg
- Installation – Reverse Hang / Radom Match
- Weight – 15 OZ/LY (340 gr/m<sup>2</sup>)
- Packing: 30 LY(37.4 m<sup>2</sup>) / Roll

## Environmental Attributes

- Low VOC meets CA01350
- Meets LEED criteria for EQc2
- Meets NSF/ANSI 342 certification; check with distributor for actual level
- Meets GB18585-2001

## Fire Resistance Attributes

- USA ASTM E84 Class A
- China GB8624 Class B1
- European EN13501 Class B1
- British BS 476 Part 6 & Part 7 Class 0



燃烧性能等级标识





**V15-112**



**V15-113**



**V15-114**



**V15-115**



**V15-116**



# Halcyon



## Specifications

- Width – 52/54 in (132/137 cm)
- Backing – Osnaburg
- Installation – Reverse Hang / Radom Match
- Weight – 15 OZ/LY (340 gr/m<sup>2</sup>)
- Packing: 30 LY(37.4 m<sup>2</sup>) / Roll

## Environmental Attributes

- Low VOC meets CA01350
- Meets LEED criteria for EQc2
- Meets NSF/ANSI 342 certification; check with distributor for actual level
- Meets GB18585-2001

## Fire Resistance Attributes

- USA ASTM E84 Class A
- China GB8624 Class B1
- European EN13501 Class B1
- British BS 476 Part 6 & Part 7 Class 0



燃烧性能等级标识





**V15-117**



**V15-118**



**V15-119**



**V15-120**



**V15-121**



# Omni



## Specifications

- Width – 52/54 in (132/137 cm)
- Backing – Osnaburg
- Installation – Reverse Hang / Radom Match
- Weight – 15 OZ/LY (340 gr/m<sup>2</sup>)
- Packing: 30 LY(37.4 m<sup>2</sup>) / Roll

## Environmental Attributes

- Low VOC meets CA01350
- Meets LEED criteria for EQc2
- Meets NSF/ANSI 342 certification; check with distributor for actual level
- Meets GB18585-2001

## Fire Resistance Attributes

- USA ASTM E84 Class A
- China GB8624 Class B1
- European EN13501 Class B1
- British BS 476 Part 6 & Part 7 Class 0



燃烧性能等级标识





**V15-122**



**V15-123**



**V15-125**



**V15-124**



# Ravelle Texture



## Specifications

- Width – 52/54 in (132/137 cm)
- Backing – Osnaburg
- Installation – Reverse Hang / Radom Match
- Weight – 15 OZ/LY (340 gr/m<sup>2</sup>)
- Packing: 30 LY(37.4 m<sup>2</sup>) / Roll

## Environmental Attributes

- Low VOC meets CA01350
- Meets LEED criteria for EQc2
- Meets NSF/ANSI 342 certification; check with distributor for actual level
- Meets GB18585-2001

## Fire Resistance Attributes

- USA ASTM E84 Class A
- China GB8624 Class B1
- European EN13501 Class B1
- British BS 476 Part 6 & Part 7 Class 0



燃烧性能等级标识







**V15-126**



**V15-127**



**V15-128**



**V15-129**



**V15-130**



# Skyline



## Specifications

- Width – 52/54 in (132/137 cm)
- Backing – Osnaburg
- Installation – Reverse Hang / Radom Match
- Weight – 15 OZ/LY (340 gr/m<sup>2</sup>)
- Packing: 30 LY(37.4 m<sup>2</sup>) / Roll

## Environmental Attributes

- Low VOC meets CA01350
- Meets LEED criteria for EQc2
- Meets NSF/ANSI 342 certification; check with distributor for actual level
- Meets GB18585-2001

## Fire Resistance Attributes

- USA ASTM E84 Class A
- China GB8624 Class B1
- European EN13501 Class B1
- British BS 476 Part 6 & Part 7 Class 0



燃烧性能等级标识







**V15-131**



**V15-132**



**V15-133**



**V15-134**



**V15-135**



**V15-136**



# Regency Silk



## Specifications

- Width – 52/54 in (132/137 cm)
- Backing – Osnaburg
- Installation – Reverse Hang / Radom Match
- Weight – 15 OZ/LY (340 gr/m<sup>2</sup>)
- Packing: 30 LY(37.4 m<sup>2</sup>) / Roll

## Environmental Attributes

- Low VOC meets CA01350
- Meets LEED criteria for EQc2
- Meets NSF/ANSI 342 certification; check with distributor for actual level
- Meets GB18585-2001

## Fire Resistance Attributes

- USA ASTM E84 Class A
- China GB8624 Class B1
- European EN13501 Class B1
- British BS 476 Part 6 & Part 7 Class 0



燃烧性能等级标识







**V15-137**



**V15-138**



**V15-139**



**V15-140**



**V15-141**



**V15-142**



# Embarcadero



## Specifications

- Width – 52/54 in (132/137 cm)
- Backing – Osnaburg
- Installation – Reverse Hang / Radom Match
- Weight – 15 OZ/LY (340 gr/m<sup>2</sup>)
- Packing: 30 LY(37.4 m<sup>2</sup>) / Roll

## Environmental Attributes

- Low VOC meets CA01350
- Meets LEED criteria for EQc2
- Meets NSF/ANSI 342 certification; check with distributor for actual level
- Meets GB18585-2001

## Fire Resistance Attributes

- USA ASTM E84 Class A
- China GB8624 Class B1
- European EN13501 Class B1
- British BS 476 Part 6 & Part 7 Class 0



燃烧性能等级标识







**V15-143**



**V15-144**



**V15-145**



**V15-146**



**V15-147**



**V15-148**



# Zephyr



## Specifications

- Width – 52/54 in (132/137 cm)
- Backing – Osnaburg
- Installation – Reverse Hang / Radom Match
- Weight – 15 OZ/LY (340 gr/m<sup>2</sup>)
- Packing: 30 LY(37.4 m<sup>2</sup>) / Roll

## Environmental Attributes

- Low VOC meets CA01350
- Meets LEED criteria for EQc2
- Meets NSF/ANSI 342 certification; check with distributor for actual level
- Meets GB18585-2001

## Fire Resistance Attributes

- USA ASTM E84 Class A
- China GB8624 Class B1
- European EN13501 Class B1
- British BS 476 Part 6 & Part 7 Class 0



燃烧性能等级标识







**V15-149**



**V15-150**



**V15-151**



**V15-152**



**V15-153**



Pattern Name	Pattern Number	Weight	Backing	Installation	Roll Size
Fiji	V15-101 - V15-106	15 oz/ly (340 gr/m <sup>2</sup> )	Scrim	Reverse Hang/Random Match	52" - 54" * 30 Yards
Bristol	V15-107 - V15-111	15 oz/ly (340 gr/m <sup>2</sup> )	Scrim	Reverse Hang/Random Match	52" - 54" * 30 Yards
Brio	V15-112 - V15-116	15 oz/ly (340 gr/m <sup>2</sup> )	Scrim	Reverse Hang/Random Match	52" - 54" * 30 Yards
Halcyon	V15-117 - V15-121	15 oz/ly (340 gr/m <sup>2</sup> )	Scrim	Reverse Hang/Random Match	52" - 54" * 30 Yards
Omni	V15-122 - V15-125	15 oz/ly (340 gr/m <sup>2</sup> )	Scrim	Reverse Hang/Random Match	52" - 54" * 30 Yards
Ravelle Texture	V15-126 - V15-130	15 oz/ly (340 gr/m <sup>2</sup> )	Scrim	Reverse Hang/Random Match	52" - 54" * 30 Yards
Skylines	V15-131 - V15-136	15 oz/ly (340 gr/m <sup>2</sup> )	Scrim	Reverse Hang/Random Match	52" - 54" * 30 Yards
Regency Silk	V15-137 - V15-142	15 oz/ly (340 gr/m <sup>2</sup> )	Scrim	Reverse Hang/Random Match	52" - 54" * 30 Yards
Embarcadero	V15-143 - V15-148	15 oz/ly (340 gr/m <sup>2</sup> )	Scrim	Reverse Hang/Random Match	52" - 54" * 30 Yards
Zephyr	V15-149 - V15-153	15 oz/ly (340 gr/m <sup>2</sup> )	Scrim	Reverse Hang/Random Match	52" - 54" * 30 Yards

## SPECIFICATIONS

- 52-54" (132/137 cm) width.
- Meets/Exceeds CCC-W-408D & W101 Specifications
- High tear and tensile strength
- Highly cleanable & stain resistant
- Fire Certification - Class A - ASTM E84
- Fire Certification-GB8624-2012-B1(B-s2,d0, t0)
- Color fast water-based inks
- Low VOC CA01350 (Indoor Air Quality)
- No formaldehyde or heavy metals
- Meets/Exceeds GB18185-2001 Standard for harmful substances
- Meets BS476 Part 6/7-British Class 0 Standard
- Non-ortho phthalate plasticizers
- Visit [versawallcovering.com](http://versawallcovering.com) for technical information.

## WARRANTY

Versa products are guaranteed to be free of defects in workmanship and materials for five years.





VERSA<sup>®</sup>  
WALLCOVERING

[www.excelwallpapers.com](http://www.excelwallpapers.com)



